

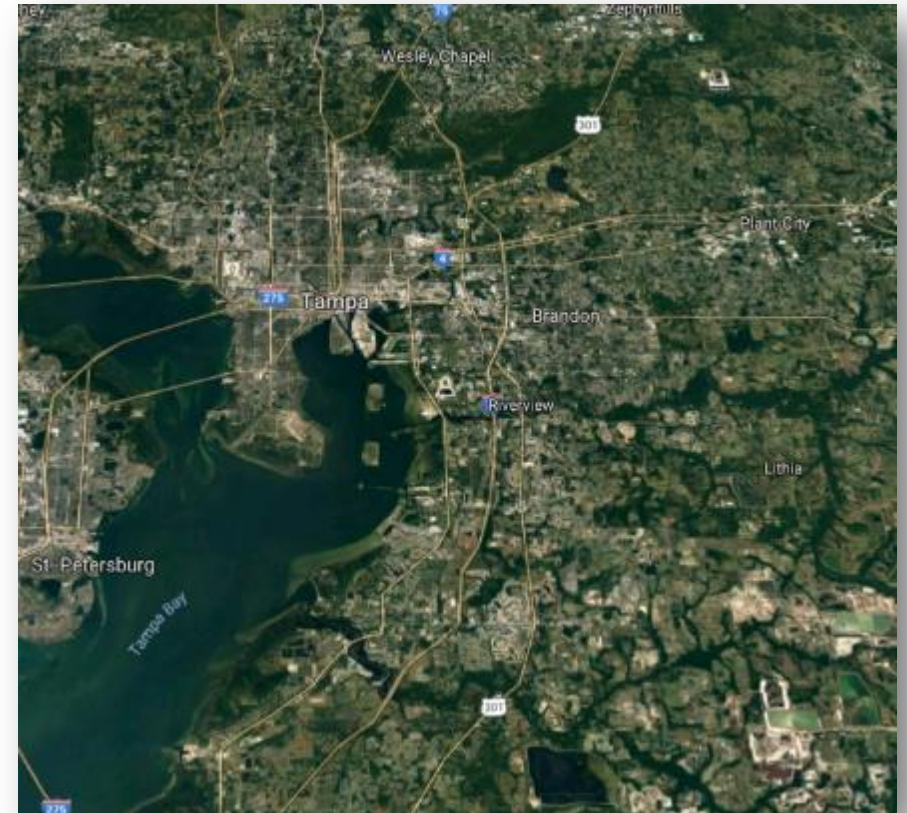
Hillsborough County 2045 Population and Employment Projections and Allocations Project Update

Planning Commission
March 12, 2018



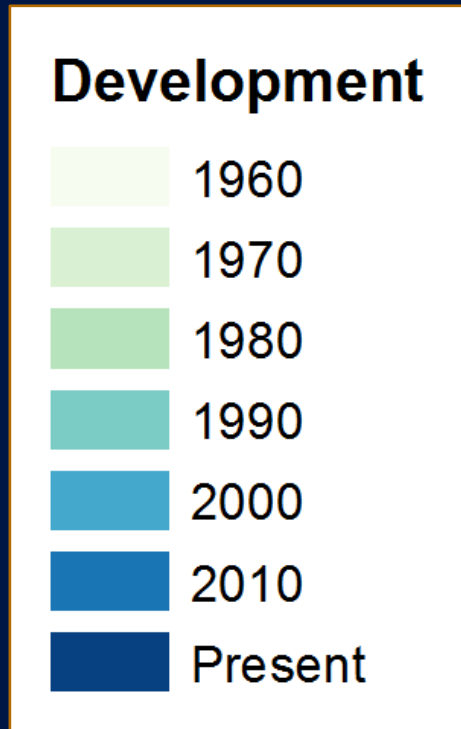
What will Hillsborough County look like in 25 years?

- Working with County and City Staff and other stakeholders to determine:
 - Where will we grow?
 - How will we grow?
 - What does this mean for...
 - Transportation?
 - Housing?
 - Infrastructure?
 - Schools?



Land Use Trends

Developed land: Present



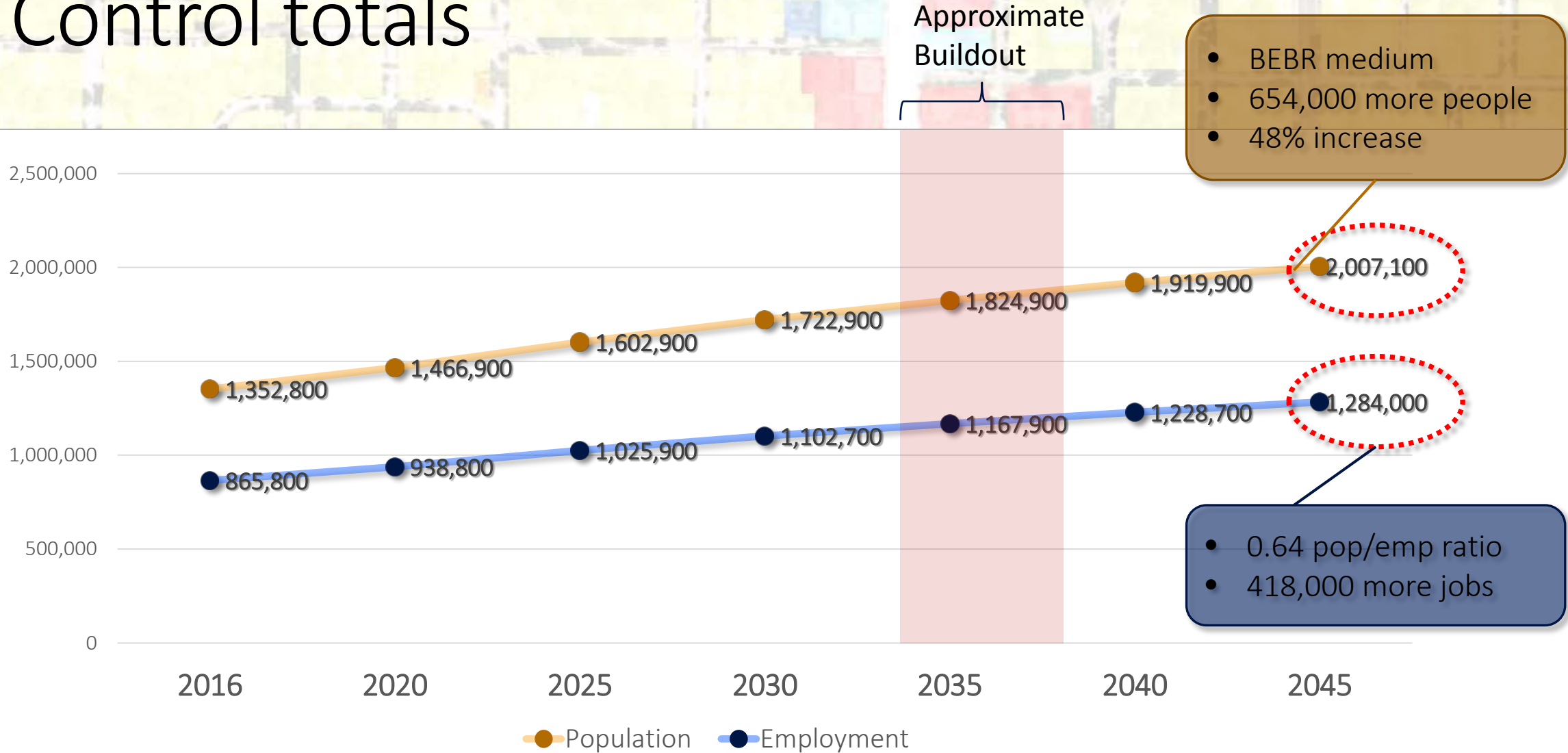
49,600 *acres*

Vacant, developable and redevelopable land within the Urban Services Area.

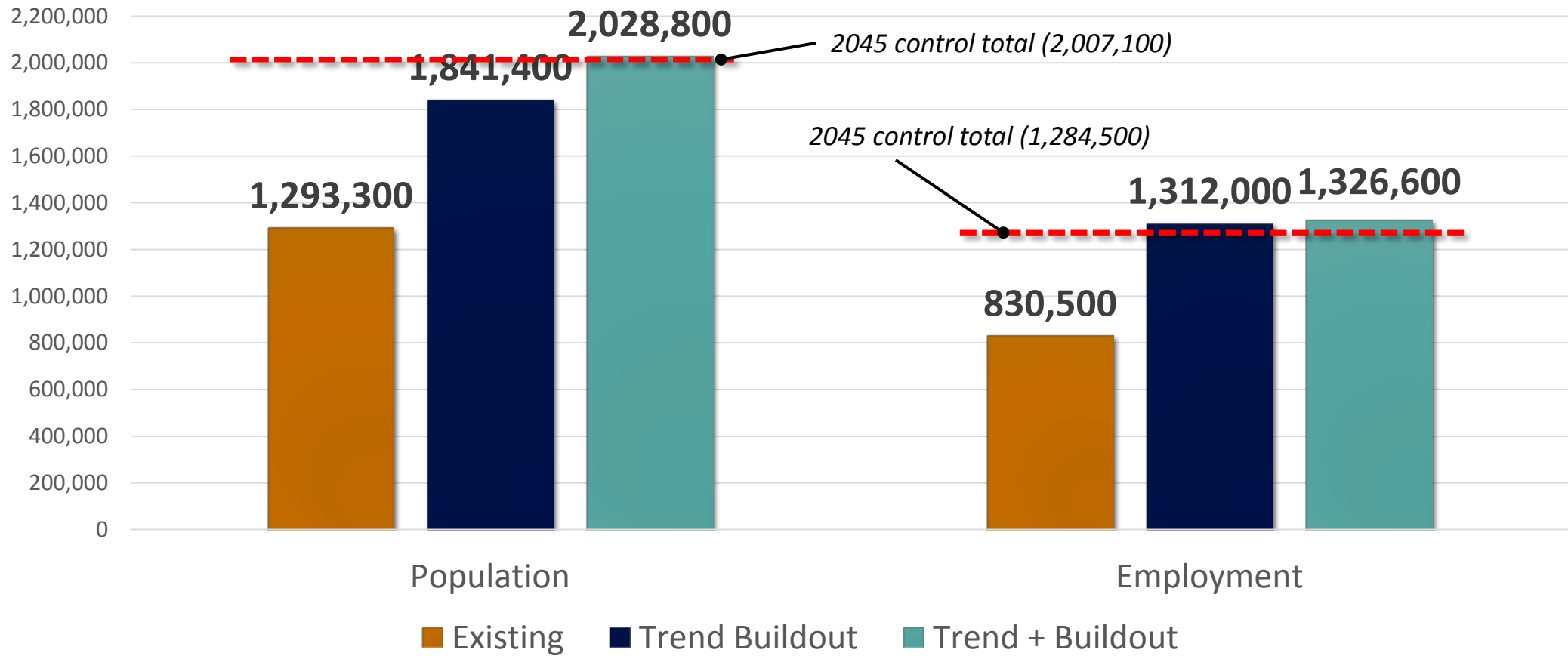


Source: Hillsborough County MPO


Control totals




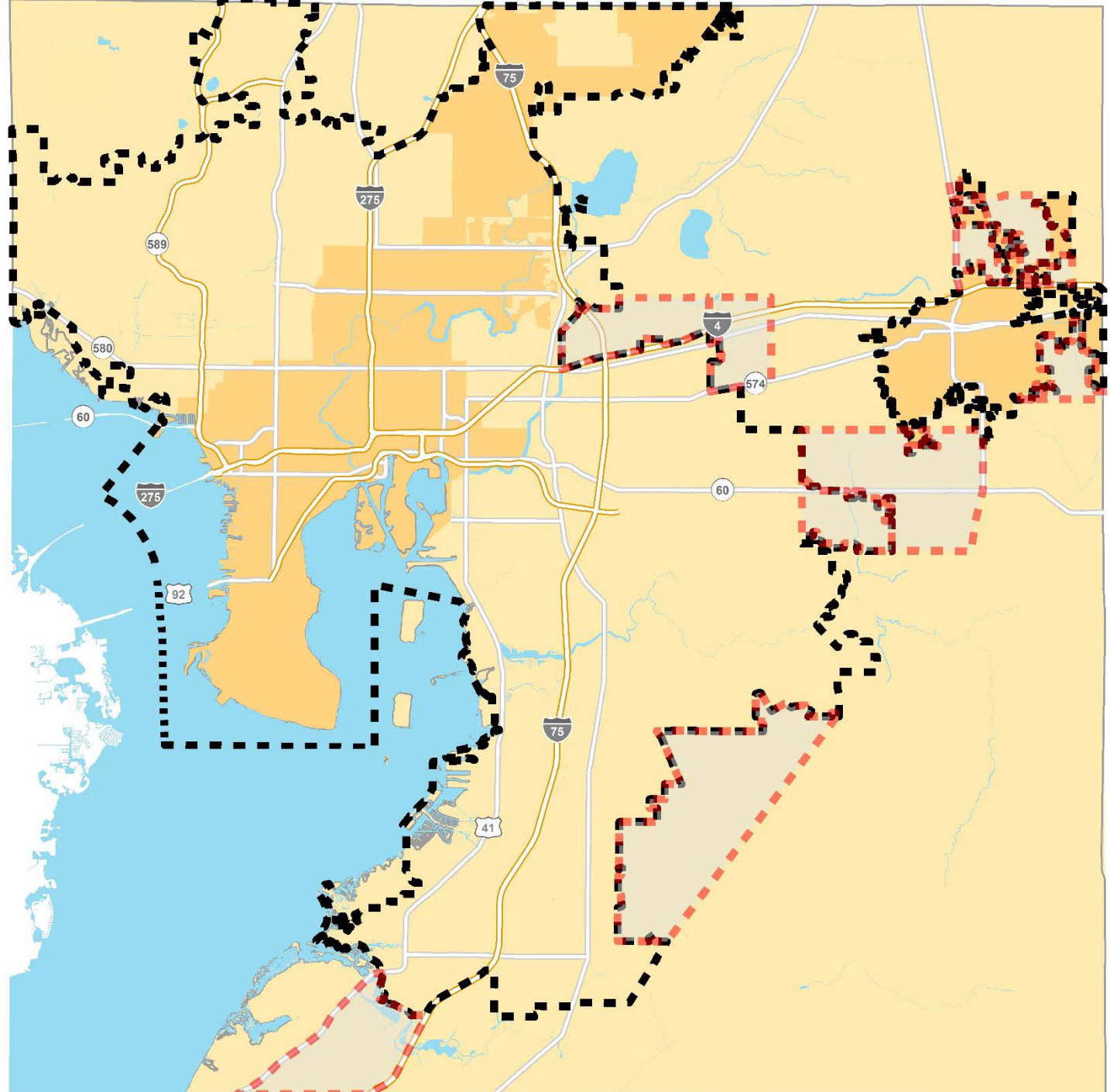
Buildout population and employment



Urban Service Area Expansion

 Existing Urban Services Boundary

 Expansion Area

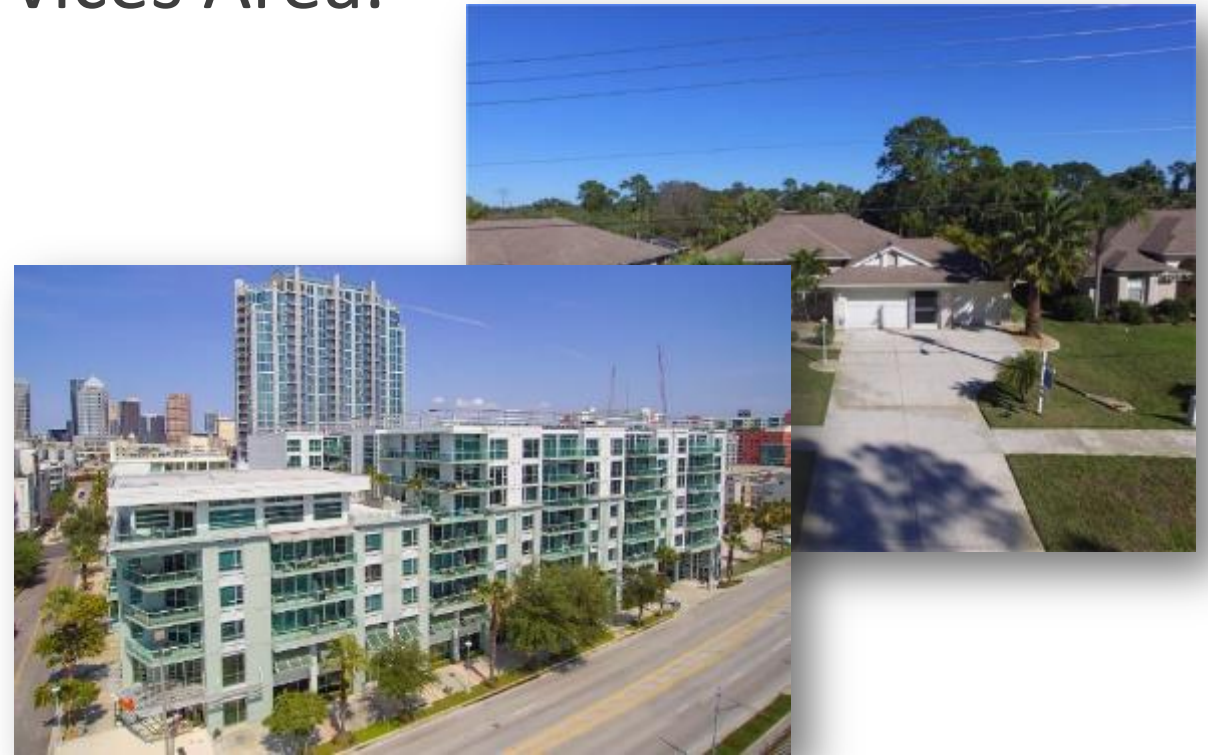


Buildout & 2045 population and employment by jurisdiction

| | Population | | | Employment | | |
|---------------------|---------------------|---------------------|-----------------------|------------|---------------------|-----------------------|
| | Base Year (2016) | Trend (buildout) | Trend+ (expansion) | Existing | Trend (buildout) | Trend+ (expansion) |
| Hillsborough County | 884,600 | 1,277,500 | 1,464,000 | 402,000 | 660,300 | 674,800 |
| City of Tampa | 347,900 | 465,500 | 465,500 | 388,000 | 551,300 | 551,300 |
| Plant City | 35,500 | 69,800 | 70,700 | 27,100 | 83,100 | 83,100 |
| Temple Terrace | 24,800 | 28,000 | 28,000 | 13,700 | 17,100 | 17,100 |

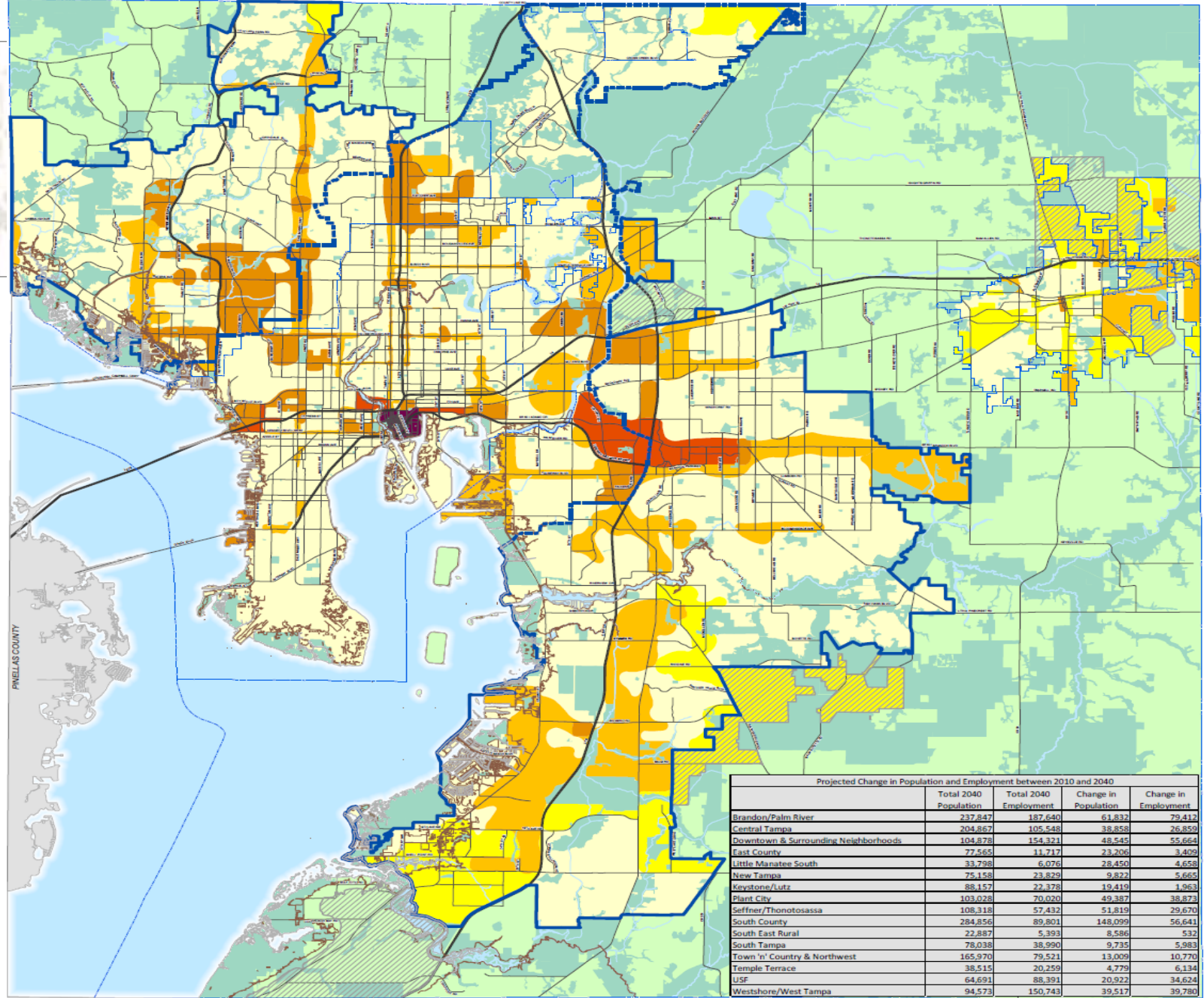
Scenario Test: How will the market respond?

- Pressure to expand Urban Services Area.
- Redevelopment.
- Infill and intensification.
- Potential export of
Population & Jobs.



2040 Vision

Maintain general consistency with 2040 Vision



Next Steps



- Continue to work with local government staff.
- Presentations to County and Cities.
- Finalize “Trend+” (expansion) scenario.
- Develop alternative scenarios.

Schedule and Process



Background Research

Trend Scenario

Alternative Scenarios

Public Outreach

Hybrid Scenario

Project Complete

Hillsborough County 2045 Population and Employment Projections and Allocations Project Update

Planning Commission
March 12, 2018

