



ANISE GLOBAL GASTROBAR

777 N Ashley Drive

Storefront & Sidewalk Cafe Grant

Applicant:

Anise Global Gastrobar

Intent:

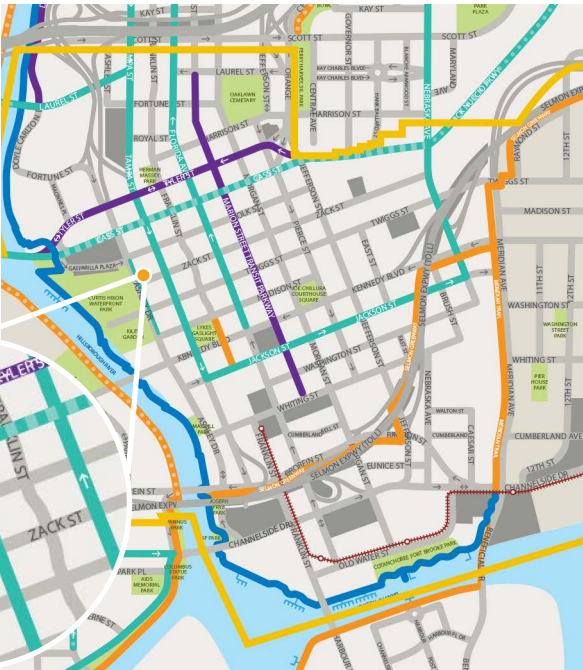
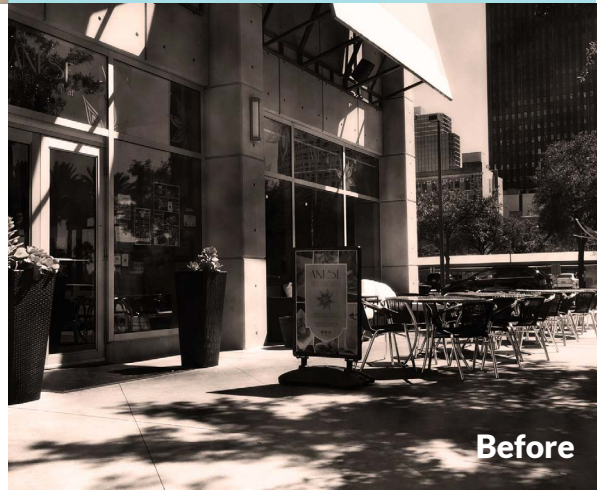
Provide shade, enhance pedestrian condition, create outdoor dining experience, increase signage

Project Scope:

Fixed single-arm cafe umbrellas

Impact to Downtown:

Created a welcoming retail corner in a highly visible part of downtown



Project Location

Project completed
August 6, 2015

\$5,000 Grant Award

\$5,252 Other Expenses

\$10,251 Total Investment